

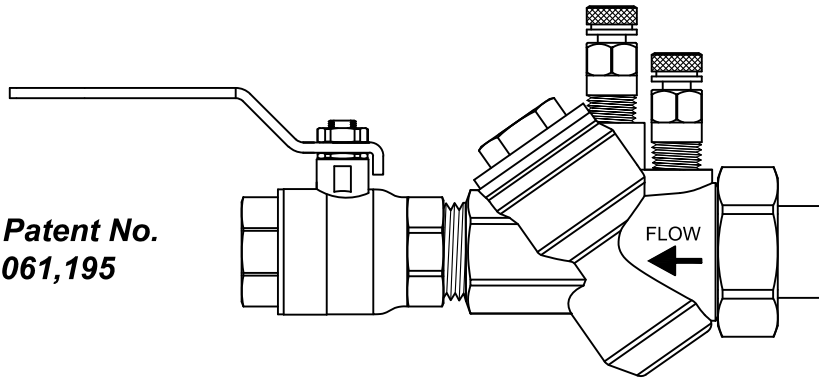


# No Lead AFLB Series Specifications

## No Lead Automatic Pressure Independent Flow Limiter w/ Ball Valve

A: AFLB - 1/2" - 1"L

**U.S. Patent No.  
8,061,195**



**PRODUCT DESCRIPTION:** The NLAFLB is an Automatic Pressure Independent Flow Limiting device, male ended by union with a NSF-61-G & NSF-372 certified ball valve attached, rated at 600 WOG / CWP @ 250° F. The NLAFLB is supplied with a stainless steel flow limiting cartridge that can be removed for cartridge exchange, if necessary. The NLAFLB comes standard with two pressure/temperature ports and a hanging identification tag. The ball valve end, or run-out side, is available in FNPT only. The union side connections available include 1/2" MNPT, FNPT, & SWT.

STANDARD MATERIAL SPECIFICATIONS														STANDARD OPERATING SPECIFICATIONS													
Body O-Ring Tail Piece Union Nut Flow Cartridge Diaphragm Spring PT Port Ball Valve Stem Packing Nut Ball Ball Seat, Packing Gland Handle		Forged Brass ASTM B171												Control Range:		2 psi - 60+ psi											
		EPDM												Accuracy:		±5%											
		Brass ASTM B171												Max Working Pressure:		600 WOG / CWP											
		Brass ASTM B455												Max Operating Temperature:		40°F to 250°F											
		ASTM A582 Type 303 Stainless Steel												Start-Up Head Loss:		5 Feet of H <sub>2</sub> O											
		EPDM												Specification information is provided to assist and is given without obligation or warranty. The Company reserves the right to make changes in design, materials, and/or specifications without notice or liability.													
		302 Stainless Steel																									
		EPDM Dual Durometer Core																									
Brass C28500																											
		Brass C28500 - Blow-Out Proof																									
		Brass B124 C37700																									
		Brass C28500, Chrome Plated																									
		PTFE																									
		Dacromet Steel Vinyl Cover																									

Valve Size		FLOW RATES (GPM) * CONTROL RANGE 2 - 60+ PSID																									
		A	B	C	D	E	F	G	H	I	J	K	L	M	N	O	P	Q	R	S	T	U	V	W	X	Y	Z
A	½" - 1" L	.33	.50	.75	1	1.25	1.5	1.75	2	2.25	2.5	2.75	3	3.5	4	4.5	5	5.5	6	6.5	7	7.5	8	9	10	11	12

\* Custom flow rates can be calibrated at the factory for an additional charge.  
Unless confirmed as special, flow rates will default to standard flow rate.

### PRODUCT SPECIFICATIONS:

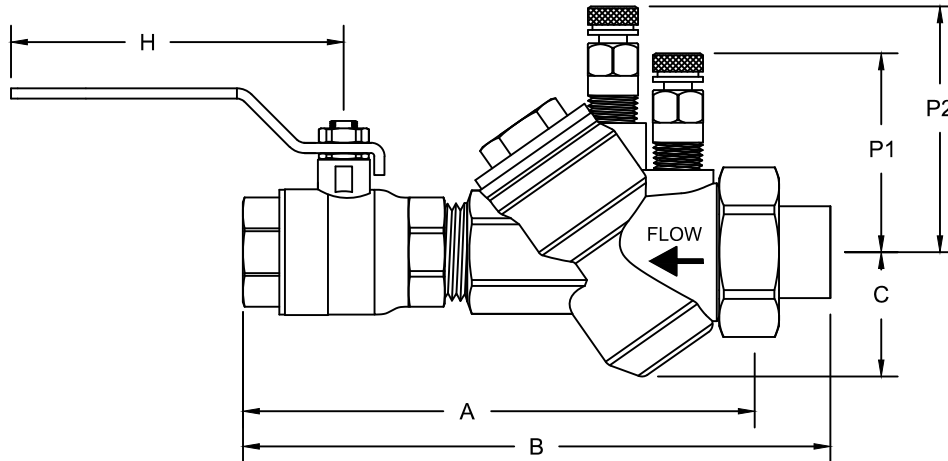
- The No Lead Automatic Flow Limiter with Ball Valve (NLAFLB) shall have flow measurement capability
- The NLAFLB shall have a static orifice to control flow
- The NLAFLB Cartridge shall be permanently marked with the letter that corresponds to the factory preset GPM
- All flow cartridge wear surfaces shall be stainless steel
- The NLAFLB shall have a 2 PSID start up rating
- The NLAFLB Cartridge shall have a large operational differential range
- The NLAFLB Cartridge shall provide continual flow at differential pressures above design limits
- The NLAFLB Cartridge shall be removable for cleaning or exchange if required



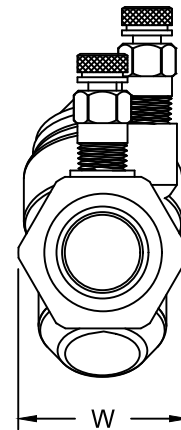
## AFLB Series Dimensions

### No Lead Automatic Pressure Independent Flow Limiter w/ Ball Valve

A: AFLB - 1/2" - 1"L



BALL VALVE SIZE AND TYPE	A	TAIL PIECE	B	WEIGHT (lbs)	C	H	P1	P2	W
1/2" SWT	5.7	- M	7.3	1.8	1.3	3.7	2.3	2.8	1.7
		1/2" - F	6.4	1.8					
		- S	6.4	1.7					
1/2" FPT	5.4	- M	7.0	1.8	1.3	3.7	2.3	2.8	1.7
		1/2" - F	6.0	1.8					
		- S	6.0	1.7					
3/4" SWT	6.6	- M	8.1	2.4	1.4	3.8	2.0	2.6	1.8
		1/2" - F	7.3	2.4					
		- S	7.3	2.4					
		- M	8.3	2.5					
		3/4" - F	7.2	2.4					
		- S	7.2	2.4					
3/4" FPT	6.1	- M	7.5	2.4	1.4	3.8	2.0	2.6	1.8
		1/2" - F	7.2	2.5					
		- S	6.8	2.4					
		- M	7.8	2.5					
		3/4" - F	7.0	2.4					
		- S	6.8	2.4					
1" SWT	7.3	1/2" - M	9.5	3.5	1.2	5.0	2.0	2.5	2.1
		3/4" - M	9.5	3.5					
		- S	8.2	3.3					
		- M	9.5	3.6					
		1" - F	8.5	3.4					
1" FPT	6.7	- S	8.5	3.3	1.2	5.0	2.0	2.5	2.1
		1/2" - M	8.7	3.5					
		3/4" - M	8.7	3.5					
		- S	7.5	3.3					
		- M	8.7	3.6					
		1" - F	7.6	3.4					
		- S	7.6	3.3					



*Note: Dimensions listed above do not include ProPress or any other special fittings or adapters. All dimensions, weights, and materials are subject to minor variations. Consult with factory for confirmation of dimensions and material specifications. Sweat size listed is nominal and will differ from the actual, measurable size.*

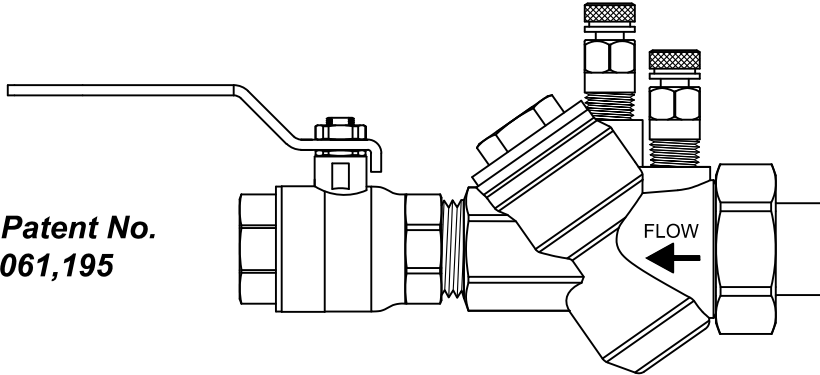


## AFLB Series Submittal

### No Lead Automatic Pressure Independent Flow Limiter w/ Ball Valve

A: AFLB - 1/2" - 1" L

U.S. Patent No.  
8,061,195



AFLB - X - X - X - X - X - X - XX,

MODEL DESIGNATION	VALVE SIZE	FIXED END LINE SIZE	FIXED END CONNECTION	TAIL PIECE SIZE	TAIL PIECE CONNECTION	FLOW RATE CODE	OPTIONS <small>separate w/ comma</small>
NLAFLB - No Lead Automatic Flow Limiter w/ Ball Valve	A	1 - 1/2" 2 - 3/4" 3 - 1"	F - FPT * S - SWT	1 - 1/2" 2 - 3/4" 3 - 1"	F - FPT S - SWT M - MPT	Use chart below for code or specify special rate.	XH - Extended Handle XP - Extended PT FM - Flow Measurement

\* 1/2" SWT shall use a FPT ball valve with a SWT x MPT Copper adapter shipped loose

Valve Size	FLOW RATE CODES (GPM)* CONTROL RANGE 2 - 60+ PSID																									
	A	B	C	D	E	F	G	H	I	J	K	L	M	N	O	P	Q	R	S	T	U	V	W	X	Y	Z
A 1/2" - 1" L	.33	.50	.75	1	1.25	1.5	1.75	2	2.25	2.5	2.75	3	3.5	4	4.5	5	5.5	6	6.5	7	7.5	8	9	10	11	12

\* Custom flow rates can be calibrated at the factory for an additional charge.  
Unless confirmed as special, flow rates will default to standard flow rate.

JOB NAME:		REPRESENTATIVE:	
ENGINEER:		REF/PO#:	
CONTRACTOR:		SUBMITTED BY:	
DATE:		DATE:	
PART # (See table above)	TAGGING/JOB INFORMATION	GPM	QUANTITY