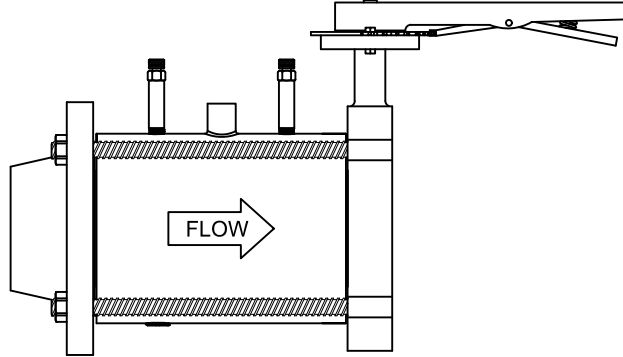




AFLWF Series Specifications

Automatic Pressure Independent Flow Limiter Wafer w/ Flange



U.S. Patent No. 8,061,195

PRODUCT DESCRIPTION: The AFLWF is a combination butterfly valve, wafer style automatic pressure independent flow limiting device, and an ANSI Class 150# weld neck flange. The full flange face wafer contains one or more stainless steel flow limiting cartridges that are preset at the factory for a specific flow. The cartridges can be removed for cleaning, and if necessary, cartridge exchange. The nodular cast iron butterfly valve has a combination infinite/10 position memory stop plate, a one piece disc/shaft, a triple shaft bearing, an stainless steel disc, and an EPDM liner. AFLWF comes with (2) EXT PT's, Flange gasket and rod set.

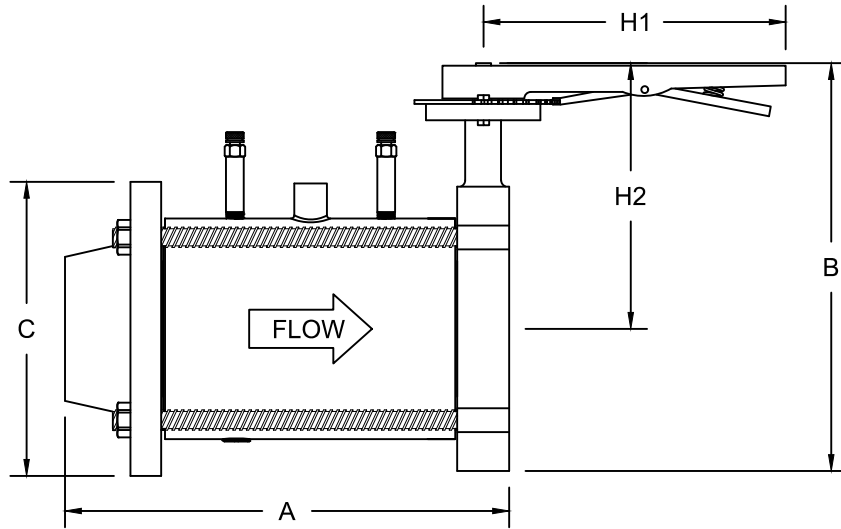
STANDARD MATERIAL SPECIFICATIONS		
Wafer		ASTM A536 Ductile Iron
O-Ring		EPDM
Flow Cartridge		ASTM A582 Type 303 Stainless Steel
Diaphragm		EPDM
Spring		302 Stainless Steel
PT Port		EPDM Dual Durometer Core
Flange Gasket		Aramid Fiber/NBR
Flange		Forged Carbon Steel ASTM A105
Bolts		ASTM A193 Steel
Butterfly Valve *	Body	Nodular Cast Iron
	Seat	EPDM
	Disc	Stainless Steel
	Stem	Stainless Steel
	Seal Support	Plastic
	O-Ring	NBR
	Bushings	PTFE
	Taper Pin	Stainless Steel
* Butterfly valve is rated at 200 PSIG and is suitable for dead-end service		
PRODUCT SPECIFICATIONS		
Cartridge Control range:		2 psi - 60+ psi
Accuracy:		±5%
Start-Up Head Loss:		5 Feet of H ₂ O
Specification information is provided to assist and is given without obligation or warranty. The Company reserves the right to make changes in design, materials, and/or specifications without notice or liability.		

NOTE: The specific ASTM standard may vary and should be confirmed at time of order.



AFLWF Series Dimensions

Automatic Pressure Independent Flow Limiter Wafer w/ Flange



U.S. Patent No. 8,061,195

SIZE	MODEL	A	B	C	H1	H2	WEIGHT	# OF AFL CARTRIDGES	MAX GPM FLOW
2½"	AFLWF250	12.56	11.65	7.00	10.25	8.15	36	1	70
3"	AFLWF300	12.56	12.13	7.50	10.25	8.39	42	1	130
4"	AFLWF400	14.05	14.80	9.00	10.25	9.13	65	2	270
5"	AFLWF500	14.70	14.65	10.00	10.25	9.65	81	3	410
6"	AFLWF600	14.70	15.63	11.00	10.25	10.16	101	4	560
8"	AFLWF800	15.36	18.90	13.50	*	20.67	162	7	960
10"	AFLWF1000	18.68	21.26	16.00	*	13.27	228	12	1600

* Denotes a gear operated valve.

Note: All dimensions, weights, and materials are subject to minor variations. Consult with factory for confirmation of dimensions, weights, and material specifications at the time of order.