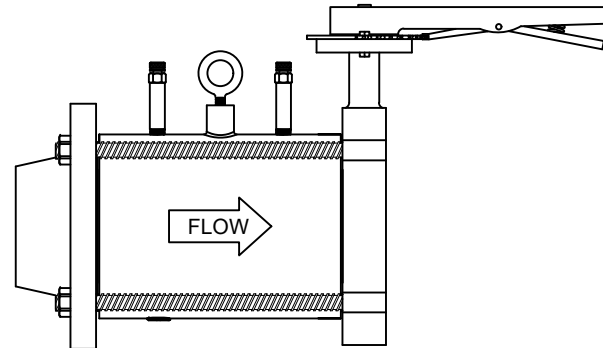




**AFLWF Series Specifications**  
**Automatic Pressure Independent Flow Limiter Wafer w/ Flange**



**U.S. Patent No. 8,061,195**

**PRODUCT DESCRIPTION:** The AFLWF is a combination butterfly valve, wafer style automatic pressure independent flow limiting device, and an ANSI Class 150# weld neck flange. The full flange face wafer contains one or more stainless steel flow limiting cartridges that are preset at the factory for a specific flow. The cartridges can be removed for cleaning, and if necessary, cartridge exchange. The cast iron butterfly valve has a combination infinite/10 position memory stop plate, a one piece disc/shaft, a triple shaft bearing, an aluminum-bronze disc for sizes 2½" - 8", and an EPDM liner.

| STANDARD MATERIAL SPECIFICATIONS   |  |
|--|--|
| Wafer  | ASTM A536 Ductile Iron   |
| O-Ring   | EPDM   |
| Flow Cartridge   | ASTM A582 Type 303 Stainless Steel   |
| Diaphragm  | EPDM   |
| Spring   | 302 Stainless Steel  |
| PT Port  | EPDM Dual Durometer Core   |
| Lifting Lug  | ASTM F541 Steel  |
| Flange   | Forged Carbon Steel ASTM A105  |
| Bolts  | ASTM A193 Steel  |
| Butterfly Valve *  | Body: Nodular Cast Iron ASTM A536 60-4-18<br>Seat: EPDM Rubber<br>Disc (2½" - 8"): Aluminum-Bronze Sand Casting, ASTM B148 C95400<br>Shaft: Stainless Steel AISI 410<br>O-Ring: EPDM Rubber<br>Bearing: Copper ASTM B45<br>Bearing Bush: PTFE<br>Hand Lever: Nodular Cast Iron ASTM A536 60-4-18 |
| * Butterfly valve is rated at 200 PSIG and is suitable for dead-end service  |  |
| PRODUCT SPECIFICATIONS   |  |
| Cartridge Control range:   | 2 psi - 60+ psi  |
| Accuracy:  | ±5%  |
| Start-Up Head Loss:  | 5 Feet of H <sub>2</sub> O   |
| Specification information is provided to assist and is given without obligation or warranty. The Company reserves the right to make changes in design, materials, and/or specifications without notice or liability. |  |

**NOTE:** The specific ASTM standard may vary and should be confirmed at time of order.