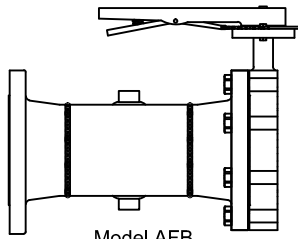
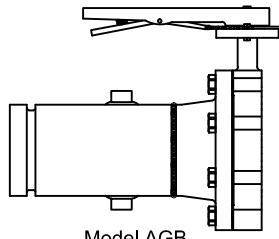


PRO *Hydronic* *Specialties*

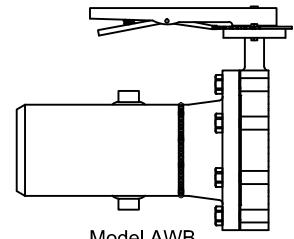
Steel Hook-Up Accessory Specifications



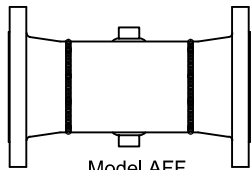
Model AFB
Flange x Butterfly Valve



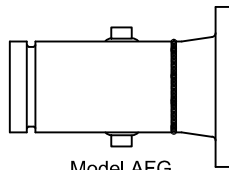
Model AGB
Groove x Butterfly Valve



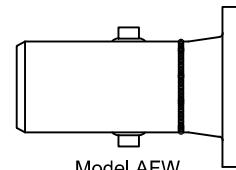
Model AWB
Weld x Butterfly Valve



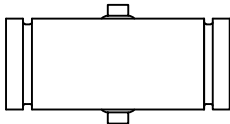
Model AFF
Flange x Flange



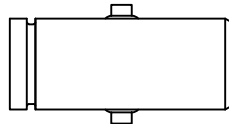
Model AFG
Flange x Groove



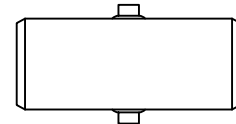
Model AFW
Flange x Weld



Model AGG
Groove x Groove



Model AGW
Groove x Weld



Model AWW
Weld x Weld

BUTTERFLY VALVE END CONNECTION OPTIONS

Slip-On Flange	
Size	Model
2½"	FL250SO
3"	FL300SO
4"	FL400SO
6"	FL600SO
8"	FL800SO
10"	FL1000SO

Weld Neck Flange	
Size	Model
2½"	FL250WN
3"	FL300WN
4"	FL400WN
6"	FL600WN
8"	FL800WN
10"	FL1000WN

Flange x Groove Adapter	
Size	Model
2½"	FGA250
3"	FGA300
4"	FGA400
6"	FGA600
8"	FGA800
10"	FGA1000

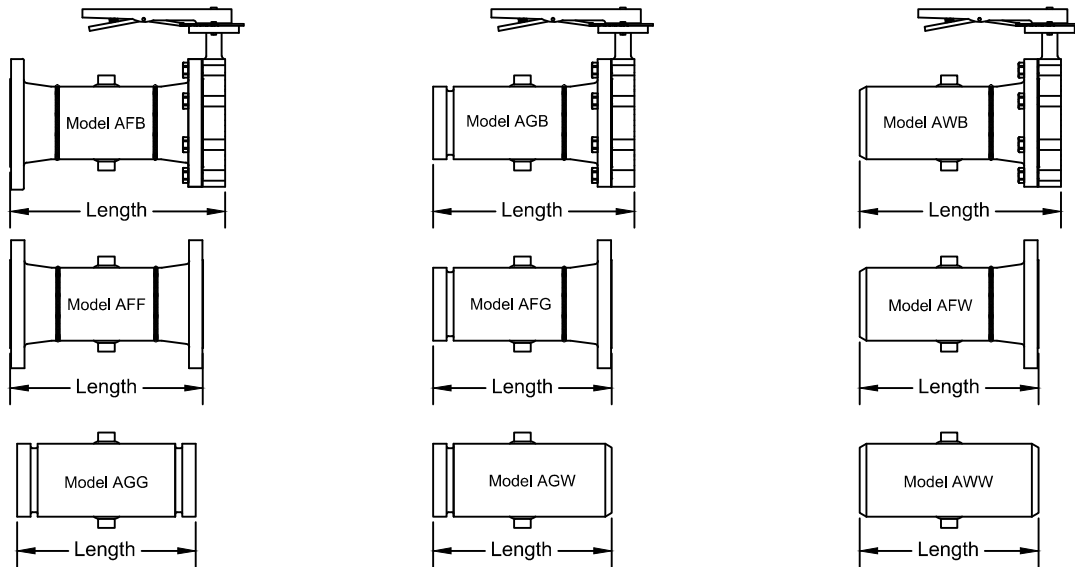
Flange x Thread Adapter	
Size	Model
2½" x 1½"	FTA250x150
2½" x 2"	FTA250x200
3" x 2"	FTA300x200
4" x 2"	FTA400x200

PRODUCT DESCRIPTION: The carbon steel hook-up accessory series is available in several end connections, providing a platform for accessory options. Options are installed in ½" threaded ports. The two ports are located at the 12:00 and 6:00 positions. Other port locations and port sizes such as ¼", ¾", and 1" are available for an additional charge. Optional flange end connections consist of Standard ANSI Class 150 pound raised-face flanges. The optional butterfly valve is rated for dead end service of 150 psi. Custom fabrications and custom lengths are available at an additional charge.

STANDARD MATERIAL SPECIFICATIONS		
Pipe		Steel ANSI Schedule 40
Flange		Forged Carbon Steel ASTM A105
Grooved Adapter		Steel ANSI Schedule 40
Port		Malleable Iron, ASTM A153
Butterfly Valve Components	Body	Nodular Cast Iron ASTM A536 60-4-18
	Seat	EPDM Rubber
	Disc (2½" - 8")	Aluminum-Bronze Sand Casting, ASTM B148 C95800
	Disc (10 & 12")	Nickel Plated Aluminum-Bronze Sand Casting, ASTM B148 C95800
	Shaft	Stainless Steel AISI 410
	O-Ring	EPDM Rubber
	Bearing	Copper ASTM B45
Bearing Bush	PTFE	
Hand Lever	Nodular Cast Iron ASTM A536 60-4-18	
Specification information is provided to assist and is given without obligation or warranty. The Company reserves the right to make changes in design, materials, and/or specifications without notice or liability.		

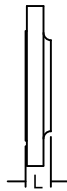
PRO *Hydronic* *Specialties*

Steel Hook-Up Accessory Dimensions




Model	End Connections	2½"		3"		4"		6"		8"		10"	
		Length	Weight	Length	Weight	Length	Weight	Length	Weight	Length	Weight	Length	Weight
AFB	Flange x Butterfly Valve	10.8	30	11.0	34	11.6	52	12.4	97	13.0	137	19.2	215
AGB	Groove x Butterfly Valve	10.8	21	11.0	26	11.6	38	12.4	68	13.0	110	19.2	178
AWB	Weld x Butterfly Valve	10.8	22	11.0	25	11.6	38	12.4	63	13.0	105	19.2	173
AFF	Flange x Flange	9.0	19	9.2	22	9.6	35	10.2	67	10.6	83	16.6	125
AFG	Flange x Groove	9.0	12	9.2	14	9.6	21	10.2	38	10.6	56	16.6	93
AFW	Flange x Weld	9.0	11	9.2	13	9.6	21	10.2	33	10.6	52	16.6	91
AGG	Groove x Groove	9.0	5	9.2	7	9.6	9	10.2	16	10.6	26	16.6	62
AGW	Groove x Weld	9.0	5	9.2	7	9.6	9	10.2	16	10.6	24	16.6	59
AWW	Weld x Weld	9.0	4	9.2	6	9.6	8	10.2	15	10.6	23	16.6	57

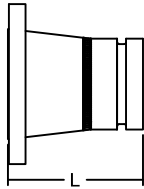
Note: All dimensions, weights, and materials are subject to minor variations. Consult with factory for confirmation of dimensions, weights, and material specifications at the time of order. Custom lengths are available upon request for an additional charge.



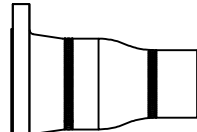
Slip-On Flange				
Size	Model	Length	Weight	
2½"	FL250SO	1.1	7	
3"	FL300SO	1.2	8	
4"	FL400SO	1.3	13	
6"	FL600SO	1.6	19	
8"	FL800SO	1.8	30	
10"	FL1000SO	1.9	42	



Weld Neck Flange				
Size	Model	Length	Weight	
2½"	FL250WN	2.8	11	
3"	FL300WN	2.8	14	
4"	FL400WN	3.0	16	
6"	FL600WN	3.5	25	
8"	FL800WN	4.0	40	
10"	FL1000WN	4.0	56	



Flange Grooved Adapter				
Size	Model	Length	Weight	
2½"	FGA250	4.8	13	
3"	FGA300	4.8	16	
4"	FGA400	5.0	18	
6"	FGA600	5.5	28	
8"	FGA800	6.0	45	
10"	FGA1000	8.0	72	



Flange x Thread Adapter				
Size	Model	Length	Weight	
2½" x 1½"	FTA250x150	8.0	13	
2½" x 2"	FTA250x200	8.1	13	
3" x 2"	FTA300x200	8.1	15	
4" x 2"	FTA400x200	8.9	21	