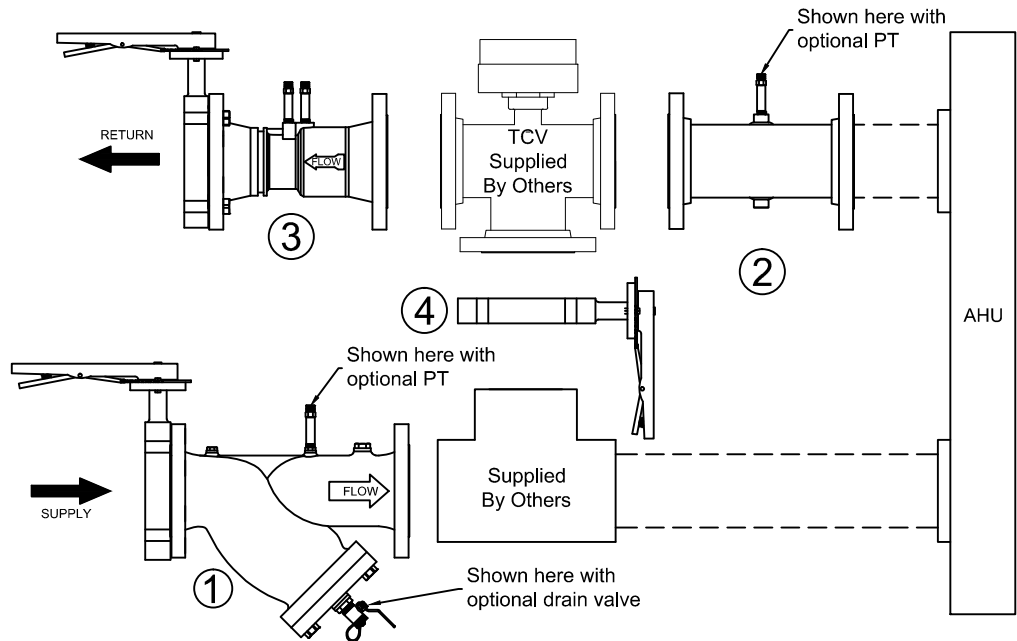


PRO *Hydronic* Specialties

Manual Steel Balancing 3-Way Kit - SV3Y Submittal

#	Model	Size
1	CBYS	
2	AFF	
3	CBVF	
4	BFV	



PRODUCT DESCRIPTION: The SV3Y Manual Balancing Valve Kit is a packaged and partially preassembled grouping of components required to complete installation of a terminal unit. Temperature control valves, piping, and coils are supplied "by others". Mounting and testing of the customer provided TCV is available at an additional charge. Parts for reductions in line size are available at an additional charge. Consult with factory for information and pricing.

COMPONENT DESCRIPTIONS			
SUPPLY	RETURN	RETURN	BYPASS
<p>CBYS: The cast iron wye strainer with standard ANSI Class 150# flange ends combined with a lug type butterfly valve for throttling/isolation. Accessories available at an additional charge.</p>	<p>AFF: Carbon Steel accessory hook-up with ANSI Class 150 # flange ends. 1/2" ports are at 6:00 and 12:00 positions. Accessories and additional port sizes are available at an additional charge.</p>	<p>Model CBVF: Carbon Steel venturi that connects to ANSI Class 150# flange ends and is combined with a lug type butterfly valve for throttling. Comes standard with two 1/4" P/T ports.</p>	<p>Model BFV: Lug type butterfly valve with combination infinite/10 position memory stop, one piece disc/shaft, triple shaft bearing, and an EPDM liner. Cap set screws available for additional charge.</p>

QUANTITY	GPM	TCV Size	TAGGING INFORMATION
JOB NAME:		CUSTOMER:	
ENGINEER:		REF/PO#:	DATE:
CONTRACTOR:		SUBMITTED BY:	DATE: