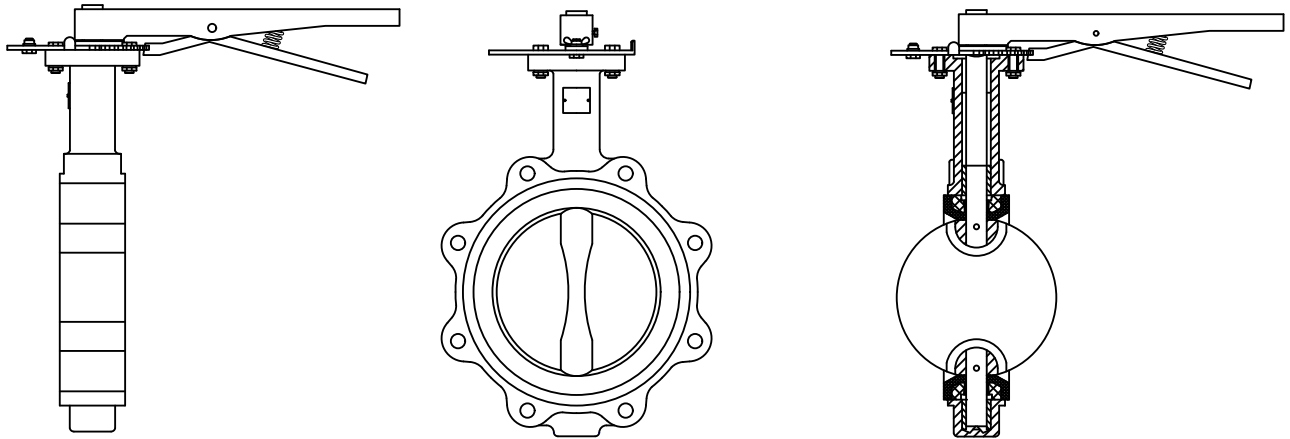




BFV Series Specifications

Butterfly Valve

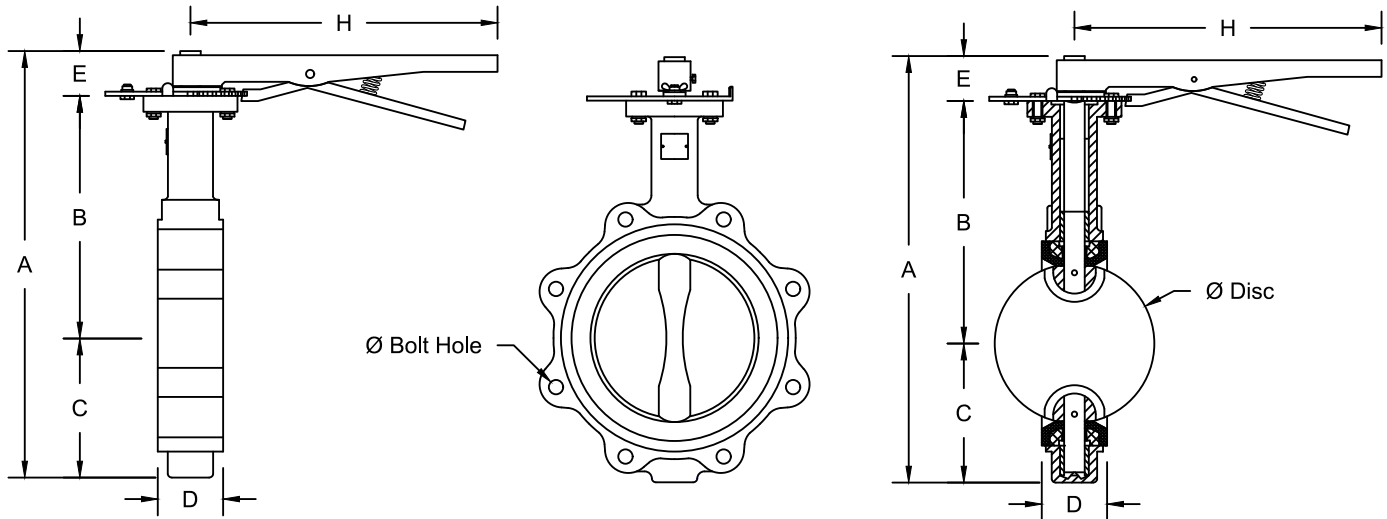


PRODUCT DESCRIPTION: The BFV is a lug type butterfly valve used for throttling. The cast iron butterfly valve is designed to be installed between standard ANSI Class 150 pound flanges. The BFV has a combination infinite/10 position memory stop plate, a one piece disc/shaft, a triple shaft bearing, an aluminum-bronze disc for sizes 2½" - 8", a nickel plated disc for the 10" and 12" sizes, and an EPDM liner. Cap set screws are available upon request for an additional charge. This Butterfly Valve meets SP-67 Specifications, Type 2.

| STANDARD MATERIAL SPECIFICATIONS | |
|--|--|
| Body | Nodular Cast Iron ASTM A536 60-4-18 |
| Seat | EPDM Rubber |
| Disc (2½" - 8") | Aluminum-Bronze Sand Casting, ASTM B148 C95400 |
| Disc (10" & 12") | Nickel Plated Aluminum-Bronze Sand Casting, ASTM B148 C95800 |
| Shaft | Stainless Steel AISI 410 |
| O-Ring | EPDM Rubber |
| Bearing | Copper ASTM B45 |
| Bearing Bush | PTFE |
| Hand Lever | Nodular Cast Iron ASTM A536 60-4-18 |
| PRODUCT SPECIFICATIONS | |
| Ratings | Seat: -22°F to 250°F |
| | Pressure: Full - 232 PSI Dead End - 200 PSI |
| Meets SP-67 Specifications, Type 1 | |
| Specification information is provided to assist and is given without obligation or warranty. The Company reserves the right to make changes in design, materials, and/or specifications without notice or liability. | |



BFV Series Dimensions Butterfly Valve



| Model | Size | | A | B | C | D | E | H | Ø Disc | Ø Bolt Hole | # of Bolts | Weight |
|---------|---------|--------|-------|-------|------|------|------|-------|--------|-------------|------------|--------|
| | Nominal | Metric | | | | | | | | | | Lbs |
| BFV250 | 2½" | DN65 | 11.50 | 6.88 | 3.49 | 1.81 | 1.13 | 10.25 | 2.50 | 5/8" | 4 | 12 |
| BFV300 | 3" | DN80 | 12.00 | 7.25 | 3.62 | 1.81 | 1.13 | 10.25 | 3.00 | 5/8" | 4 | 12 |
| BFV400 | 4" | DN100 | 13.50 | 8.00 | 4.37 | 2.06 | 1.13 | 10.25 | 4.00 | 5/8" | 8 | 18 |
| BFV500 | 5" | DN125 | 14.63 | 8.50 | 5.00 | 2.19 | 1.13 | 10.25 | 5.00 | 3/4" | 8 | 22 |
| BFV600 | 6" | DN150 | 15.50 | 9.00 | 5.37 | 2.19 | 1.13 | 10.25 | 6.00 | 3/4" | 8 | 25 |
| BFV800 | 8" | DN200 | 20.50 | 10.50 | 6.87 | 2.38 | 3.13 | * | 8.00 | 3/4" | 8 | 54 |
| BFV1000 | 10" | DN250 | 22.00 | 11.50 | 7.37 | 2.69 | 3.13 | * | 10.00 | 7/8" | 12 | 84 |
| BFV1200 | 12" | DN300 | 26.00 | 13.50 | 9.50 | 3.00 | 3.00 | * | 12.00 | 7/8" | 12 | 116 |

* Denotes a gear operated valve.

Note: All dimensions, weights, and materials are subject to minor variations. Consult with factory for confirmation of dimensions, weights, and material specifications at the time of order.