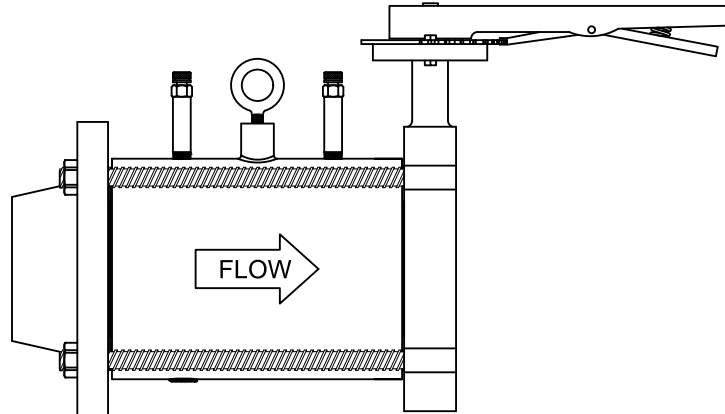




AFLWF Series Specifications

Automatic Pressure Independent Flow Limiter Wafer w/ Flange



U.S. Patent No. 8,061,195

PRODUCT DESCRIPTION: The AFLWF is a combination butterfly valve, wafer style automatic pressure independent flow limiting device, and an ANSI Class 150# weld neck flange. The full flange face wafer contains one or more stainless steel flow limiting cartridges that are preset at the factory for a specific flow. The cartridges can be removed for cleaning, and if necessary, cartridge exchange. The cast iron butterfly valve has a combination infinite/10 position memory stop plate, a one piece disc/shaft, a triple shaft bearing, an aluminum-bronze disc for sizes 2½" - 8", and an EPDM liner.

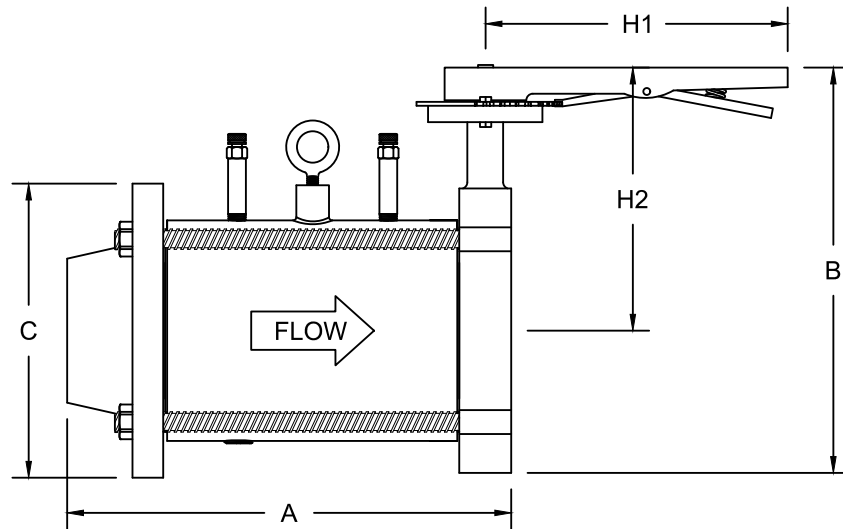
STANDARD MATERIAL SPECIFICATIONS		
	Wafer O-Ring Flow Cartridge Diaphragm Spring PT Port Lifting Lug Flange Bolts	ASTM A536 Ductile Iron EPDM ASTM A582 Type 303 Stainless Steel EPDM 302 Stainless Steel EPDM Dual Durometer Core ASTM F541 Steel Forged Carbon Steel ASTM A105 ASTM A193 Steel
Butterfly Valve *	Body Seat Disc (2½" - 8") Shaft O-Ring Bearing Bearing Bush Hand Lever	Nodular Cast Iron ASTM A536 60-4-18 EPDM Rubber Aluminum-Bronze Sand Casting, ASTM B148 C95400 Stainless Steel AISI 410 EPDM Rubber Copper ASTM B45 PTFE Nodular Cast Iron ASTM A536 60-4-18
* Butterfly valve is rated at 200 PSIG and is suitable for dead-end service		
PRODUCT SPECIFICATIONS		
Cartridge Control range:		2 psi - 60+ psi
Accuracy:		±5%
Start-Up Head Loss:		5 Feet of H ₂ O
Specification information is provided to assist and is given without obligation or warranty. The Company reserves the right to make changes in design, materials, and/or specifications without notice or liability.		

NOTE: The specific ASTM standard may vary and should be confirmed at time of order.



AFLWF Series Dimensions

Automatic Pressure Independent Flow Limiter Wafer w/ Flange



U.S. Patent No. 8,061,195

SIZE	MODEL	A	B	C	H1	H2	WEIGHT	# OF AFL CARTRIDGES	MAX GPM FLOW
2½"	AFLWF250	12.56	11.50	7.00	10.25	8.01	36	1	150
3"	AFLWF300	12.56	12.00	7.50	10.25	8.38	42	1	150
4"	AFLWF400	14.06	13.50	9.00	10.25	9.13	65	2	300
5"	AFLWF500	14.69	14.63	10.00	10.25	9.63	81	3	450
6"	AFLWF600	14.69	15.50	11.00	10.25	10.13	101	4	600
8"	AFLWF800	15.38	20.50	13.50	*	13.63	162	7	1050
10"	AFLWF1000	18.69	22.00	16.00	*	14.63	228	12	1800

* Denotes a gear operated valve.

Note: All dimensions, weights, and materials are subject to minor variations. Consult with factory for confirmation of dimensions, weights, and material specifications at the time of order.